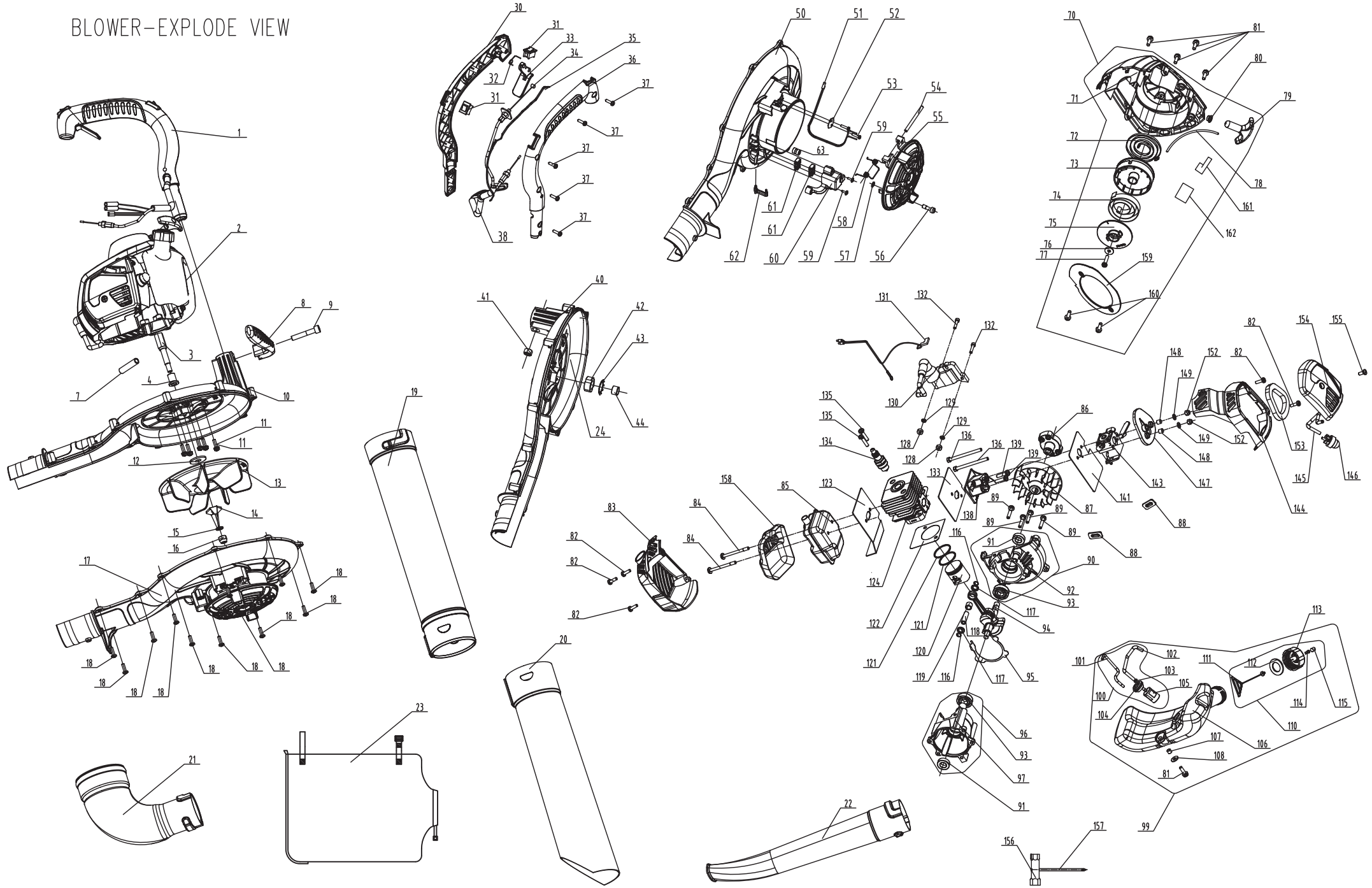


# BLOWER-EXPLODE VIEW



Spare parts list for SLT26BE				
Pos Nr	no	Description(EN)	QTY	Unit price
1	960007	Handle Asm	1	\$3,98
2	960010	Engine Asm	1	
3	963002	Axis	1	\$1,75
4	913011	Shaft Sleeve	1	\$1,38
7	961021	Corrugated Pipe	1	\$0,10
8	961033	Handle	1	\$0,74
9	968003	Screw M8X45	1	\$0,15
10	960011	Top Cover Sam	1	\$4,05
11	968008	SlT Volute Screw	5	\$0,10
12	963009	Washer	1	\$0,35
13	961005	Fan	1	\$2,50
14	913010	Blade	1	\$1,31
15	938019	Lock Washer 8	1	\$0,13
16	968006	Nut8	1	\$0,07
17	960012	Top Cover Sam	1	\$5,52
18	918012	Screw St4.8X18	11	\$0,08
22	961016	Blower Tube	1	\$2,10
30	961012	Left Cover	1	\$1,50
31	600119420	Switch	2	\$0,63
32	913016	Spring	1	\$0,13
33	961014	Trigger	1	\$0,26
34	960006	Accelerator Cable Asm	1	\$1,00
35	960008	Wire	1	\$1,60
36	961013	Right Cover	1	\$1,38
37	948024	Screw St4.2X16	5	\$0,05
38	941022	Corrugated Pipe	1	\$0,13
40	961008	Top Cover	1	\$4,77
41	938015	Nut 8	1	
42	910001	Sleeve	1	
43	913015	Retainer Ring	1	
44	913012	Bearing	1	
50	961009	Lower Cover	1	\$3,39
51	960016	Wire	1	\$0,45
52	963005	Plate	1	\$0,15
53	600139010	Screw St3.5X15	2	\$0,05
54	968004	Axis	1	\$0,12
55	961010	Cover	1	\$0,68
56	968005	Screw M6X18	1	\$0,07
57	705400013	Retainer Ring	1	\$0,05
58	963003	Spring	1	\$0,08
59	600139020	Screw St2.9X10	2	\$0,05
60	961011	Cover	1	\$0,24
61	960004	Switch	2	\$0,95
62	961020	Rocker	1	\$0,25
63	968007	Nut M6X12	1	
70	940020	Easy Starter Asm	1	\$5,85
71	941129	Top Cover	1	\$3,30
72	943081	Starter Spring	1	\$0,75
73	941063	Starter Wheel	1	\$0,60
74	600118014	Starter Driving Spring	1	\$1,07
75	941064	Starter Driving Wheel	1	\$0,33
76	948008	Gasket	1	\$0,17
77	908003	Screwst5X25	1	\$0,05
78	941066	Starter Rope	1	\$0,24

79	951015	Starter Knob	1	\$0,38
80	600138120	Sleeve	1	
81	918007	Scerwm5*18	5	\$0,10
82	908002	Screw St4.5*16L	5	\$0,05
83	961001	Muffler Cover	1	\$1,13
84	600114031	Muffler Bolt M5X56L	2	\$0,18
85	960001	Muffler	1	\$6,25
86	940023	Startup Disk Asm	1	\$1,20
87	943079	Flywheel	1	\$3,75
88	600116070	Cushion Of Fuel Tank	2	\$0,05
89	600117120	Screw M5X28L	4	\$0,19
90	940022	Black Crankshaft Box Asm	1	\$3,75
91	953074	Oil Seal	2	
92	943008	Rear Crankcase	1	
93	978006	Bearing 6001	2	
94	970004	Shaft Asm	1	\$7,43
95	945003	Crankcase Gasket	1	\$0,12
96	940021	Front Crankshaft Box Asm	1	\$4,20
97	943010	Front Crankcase	1	\$0,00
99	960013	Fuel Tank Asm	1	\$3,60
100	960014	Fuel Pipe Asm	1	
101	902005	Fuel Pipe	1	
102	961022	Fuel Pipe	1	
103	933025	Oil Pipe Snap Spring	1	
104	600116020	Oil Pipe Seat	1	
105	600116030	Oil Filter	1	
106	961004	Fuel tank	1	
107	904002	Sleeve 2	1	
108	600115060	Washer	2	
110	900047	Fuel Tank Cap,Asm 40:1	1	\$1,00
111	911030	Ring Of Tank Cover	1	
112	905007	Gasket Of Fuel Tank	1	
113	901070	Fuel Tank Cap 40:1	1	
114	931006	Oil/Air Value	1	
115	931007	Oil/Air Filter	1	
116	943004	Piston Pin Retainer	2	\$0,05
117	943037	Needle Bearing Retainer	2	\$0,17
118	943003	Piston Pin	1	\$0,36
119	943006	Needle Bearing	1	\$0,89
120	973023	Piston	1	\$2,86
121	973005	Piston Ring	2	\$0,63
122	965012	Cylinder Gasket	1	\$0,24
123	965008	Muffler Wahser	1	\$1,31
124	963008	Cylinder	1	\$6,90
128	945068	Bakelite Washer	2	\$0,12
129	918019	Washer 4	2	\$0,00
130	941001	Ignition Coil	1	\$5,54
131	940007	Wire	1	\$0,57
132	948005	Screw M4X23L	2	\$0,14
133	965003	Carburetor Washer	1	\$0,36
134	600113330	Spark Plug	1	\$2,05
135	600112060	Screw M5X23L	2	\$0,10
136	600117090	Hex Bolt M5*68L	2	\$0,19
138	961006	Carburetor Seat	1	\$1,04
139	948018	Screw M5X25	2	\$0,18
141	945066	Carburetor Gasket	1	\$0,71
143	960003	Carburetor	1	\$10,15

144	941120	Air Filter Mantle	1	\$0,67
145	941027	Oil Tube 3	1	\$0,15
146	900077	Oil Bulb	1	\$1,79
147	961007	Air Filter Seat	1	\$0,40
148	943033	Sleeve 1	2	\$0,05
149	600115040	Washer $\phi 5 \times \phi 10$	2	\$0,02
152	204020001	Nut M5	2	\$0,02
153	915002	Sponge	1	\$0,50
154	961003	Air Filter Cover	1	\$0,52
155	948033	Screw M5X14	1	\$0,03
156	948022	Sleeve	1	\$0,74
157	600319050	Screw Drive	1	\$0,32
158	963006	Muffler heat shield	1	\$1,37
159	941130	Air Deflector	1	\$0,30
160	908004	Scerwm4*12	2	\$0,03
161	945071		1	
162	900219190		1	